



HENAN HAOKEBANG MACHINERY EQUIPMENT CO.,LTD

Tel: 0391-6532688 +86-13598071775 (En)
Fax: 0391-6532688 Email: kbjx@kbsilo.com
Add: Huanghe Street, Wenxian, Jiaozuo City, Henan Province
http: //www.hkbsilo.com (En)



HENAN HAOKEBANG MACHINERY EQUIPMENT CO.,LTD



Domestic product sales network throughout Xinjiang,Yunnan,northeast China,Inner Mongolia,Hebei, Shanxi,Henan and other major cities in China.Our company has the right to export,the products were exported to the United States,Russia,South Korea,Belgium,Australia,Indonesia, Nigeria,Argentina and other countries.

We has been keeping the attitude that"customer satisfaction is our satisfaction",to keep pace with the times.We have many skilled technical staffs and experienced after-sales service team,so we can provide not only single equipment but also solutions of a full production plants to our customers.And we can provide professional technology support,reliable supply of spare parts and high quality of after-sales services to our customers.

"Devotion,Elaboration,Rigorous,Harmonious" is the enterprise spirit of Haokebang,it also shows our determination to win in the future.We pursue the best quality to be a great creator.We will provide customers with highest quality of products and best service,to win more applause and respect for Chinese national industry.

Growth is only a process,but glory is a new starting point.Experienced years of trials and hardships,Haokebang becomes leafy today.In new century,there is new hope.Along the path of exploration,Haokebang towards bravely and boldly to the forefront of china's machine industry!

Our service purpose:"serve users,be responsible to users,satisfy users!"

COMPANY PROFILE

Henan Haokebang Machinery Equipment Co., Ltd. is located in the north of Jixiang Road, Yandong Village, Huanghe Street, Wen County, Jiaozuo, Henan Province,covering an area of 60000 square meters, with 30000 square meters of standardized heavy industrial plants. The company specializes in the production of all kinds of grain silos, grain cleaning screens Various grain machinery and equipment, such as grain dryers, grain drying towers, tube dryers, three tube dryers, drum dryers, etc., are used for products using dry grain food sieves Selection, drying, and storage. The company also independently develops and produces sawdust drying machines for drying materials such as sawdust. In 2023, the company further expanded its scale and added specialized feed production lines. The company has excellent equipmentmore than 20 sets of various large and medium-sized machiningriveting and welding. assembly equipmentmore than 50management and engineering technicians with middle and senior titles.It is a modern enterprise integrating research and development production sales and maintenance.

Henan Haokebang Machinery Equipment Co.,Ltd owns a modern enterprise management system,first-class equipment, perfect detection means,high-quality scientific research staffs,high-quality agriculture machinery products,and highly dedicated spirit to face customers.It is constantly rated"advanced quality management enterprise"and"value contract and keep-credibility enterprise"for many years.The batch cycle grain dryer 5H-KB-20/5H-KB-35/5H-KB-50 and other models independently developed and produced by the company have passed the agricultural machinery promotion appraisal and obtained agricultural machinery subsidies from the Ministry of Agriculture of China.



CORPORATE CULTURE

Employee spirit: Loyalty Collaboration Professionalism Enterprising

Loyalty: due diligence, on the basis of maintaining the interests of the company.

Collaboration: good communication, mutual cooperation, to improve team efficiency as the goal.

Professional: high standards, strict requirements, continuous improvement of professional skills.

Enterprising: always create the first, in order to promote the development of the company as its own responsibility.

Business philosophy: Integrity Cooperation Win-win Development

Honesty is the basis of the market economy, and honesty is the basis for the development of the enterprise and the human being.

Cooperation is to work together for a common purpose or to accomplish a task together.

Win-win and development are under common values, sharing risks together, sharing interests together, reaching common goals and achieving sustained development.

Service concept: Service creates a good impression.

Respect customers, understand customers, continue to provide products and services beyond the expectations of customers, and become customers forever partners.



The 133rd Canton Fair



Foreign customers visiting the factory & we visit foreign customers



Middle East Poultry Expo 2023

Haokebang Grain Silo

QUALIFICATIONS



System certification



Qualification certificate



Foreign trade qualification



Promote appraisal certificates





DEVELOPMENT HISTORY

2023

In 2023, the company was awarded the title of technology-based small and medium-sized enterprise and successfully obtained approval for an invention patent for a storage device with drying and constant temperature function for mixed feed. The company actively applied for the Jiaozuo Engineering Technology Research Center and Henan Engineering Technology Research Center. In the same year, the company independently researched and developed the second set of large steel warehouse hoarding production line after 2020, becoming the leading enterprise in domestic steel warehouse production and research. The CE certificate for the company's foreign trade was reviewed and approved in the same year.

2022

In 2022, the company was awarded a safety production certificate; Under the epidemic, the company's performance did not decrease, and the single order exceeded 36 million RMB.

2021

In 2021, the company purchased 30 acres of land and invested in the construction of new factories, further expanding the scale and adding new production lines. Obtained 7 utility model patents and obtained construction enterprise qualification certificates in the same year.

2020

In 2020, the company will build a new intelligent workshop, introduce robot intelligent Press brake, laser cutting machine and other equipment, and put them into use, further improving the company's production efficiency; In the same year, the independently developed steel plate warehouse enclosure production line of the company was put into use.

2019

In March 2019, the company obtained ISO14001 Environmental Management System and OHSAS18001 Occupational Health and Safety Management System Certificate, which greatly improved the company's production and management. The 5H-KB-50 cereal dryer with circular grain dryer approved by the State Ministry of Agriculture was subsidized by the extension and appraisal of agricultural machinery.

2018

The company passed the ISO 9001 quality management system certification in May, 2018, trademark registered was carried out in Luoyang Trademark Office in June, awarded AAA credit unit by Changfeng International in August, issued seven certificates, and passed the independent acceptance of EIA in November.

2017

The company established Henan Haokebang Machinery Equipment Co., Ltd. on the original basis. The company officially launched the "Batch-type Circulating Grain Dryer" industrial technology innovation base. 5H-KB-20 & 5H-KB-35, these two models passed through the identification of agricultural machinery respectively, so that clients can get the State Ministry of Agriculture agricultural subsidies.

2014

The company has diversified its products and obtained the right of independent export. All kinds of grain silos, grain pre-cleaner, crushers, grain dryers, tube dryers and other products are exported to 109 countries and regions, with an annual output value of more than 50 million.

2008

Gongyi Xiaoyi Hongyun Machinery Factory was established on March 21, 2008, founder and legal person is Mr Shuhong Li.





Silo making machine

Haokebang has independently developed two large-scale steel plate silo enclosure production lines, further enhancing our ability to undertake, produce, and install large-scale steel plate silo. This technology also fully reflects Haokebang's leading position in the industry.





Intelligent workshop

Haokebang has introduced advanced laser cutting machine equipment, which is characterized by high precision, smooth and flat incision, automatic typesetting and material saving. The cutting steel plate is flat and beautiful. At the same time, it has introduced intelligent CNC Press brake and 24-hour intelligent bending robot, which are specialized in the bending of granary steel plates. The system is safe, stable, intelligent and efficient. The produced plates have high bending accuracy, beautiful appearance, high granary strength, and good seismic performance.



Grain Steel Plate Silo





Grain Silo

As the name implies, grain silo is a silo for storing grain. The selection of grain silo should be conducive to food security storage, be advanced to a certain extent, be conducive to the realization of mechanization, and be suitable for the implementation of advanced grain storage technology.



All steel cone bottom silo



Cement base silo



Structure of all steel cone bottom silo

The whole steel cone bottom silo is composed of three parts:

1. Silo top: including silo top ring, beam, cover plate, silo top guardrail, manhole, natural ventilation window, etc.
2. Silo barrel: including coaming, column, silo door and silo door platform, internal and external ladders and guardrails, etc.
3. Cone bottom: ring beam, cone bottom plate, cone bucket, column and tie bar, etc.

Classification of cement base silos

According to different foundation forms, it can be divided into flat bottom and cone bottom.

The cost of cone bottom is high, but the discharge depends on natural flow, without auxiliary equipment and grain storage;

The cost of flat bottom foundation is relatively low, but there is grain storage at the edge of cylinder wall. It is necessary to use auxiliary equipment or manpower to enter the silo to clean up the surplus grain.



Cement flat bottom silo



Cement cone bottom silo

Structure of silo top



The roof beam is made of C-shaped steel, the upper part is connected with the top ring of the silo, the lower part is connected with the pillar of the silo, and the beam is horizontally connected by angle steel to form the framework of the silo top. The cover plates on the top of the silo are overlapped with each other in a fan shape and fixed on the beam with bolts. The number of natural ventilation windows is determined according to the volume of the silo, and they are all distributed on the top plate of the silo. Some silos are equipped with temperature measuring system, According to the number of temperature measuring cables, the beam is replaced with the temperature measuring beam made of H steel, and the temperature measuring cable is hung.



Structure of silo

The coaming of the silo is made of 275g / m² galvanized steel plate, with the size of 1175 * 2960mm, The coaming is gradually thickened from top to bottom according to the stress of each layer, The connection between the corrugated plates is made of grade 8.8 hot-dip galvanized bolts, with rubber washers, and the joints are sealed with glue and mud strips, which is more conducive to the use of the silo in the open air and effectively guarantees the quality of grain 。 Vertical column is used to strengthen the stability of the cylinder wall and ensure the safety of the silo。 The lower part of the cylinder wall is equipped with anti explosion door, silo door platform and ladder, which can enter the silo to check the internal conditions。



Ventilation system



Structure of the cone bottom part of the all steel cone bottom silo



The column legs are processed and formed with H steel, and the adjacent column legs are connected and strengthened with angle steel; the connecting part between the silo and the cone bottom is processed and formed with channel steel or H steel, and the cone bottom plate is made in pieces and galvanized The steel plate or carbon steel plate shall be painted (Galvanized) and the connection shall be made of 8.8-grade hot-dip galvanized or 10.9-grade electro galvanized bolts。 Column leg and foundation embedded plate shall be welded and fixed。

Clean up the system



According to different cleaning equipment of materials, it can be divided into cylinder primary cleaning screen and self balance vibrating screen. Cylinder primary cleaning screen:
Long screen body, good cleaning effect,
Fully enclosed frame, good sealing and dustproof performance
Small power, high output, stable and reliable operation, convenient screen replacement and maintenance, It can be equipped with dust removal equipment to remove dust。



Suitable for mass production of large-volume materials, widely used in food, chemical, wine and other industries. The overall high strength, large output, clean up the classification effect is good. Universal joint boom, durable and durable. Feeding device. Metal sieve for easy loading and unloading.



Dedusting system

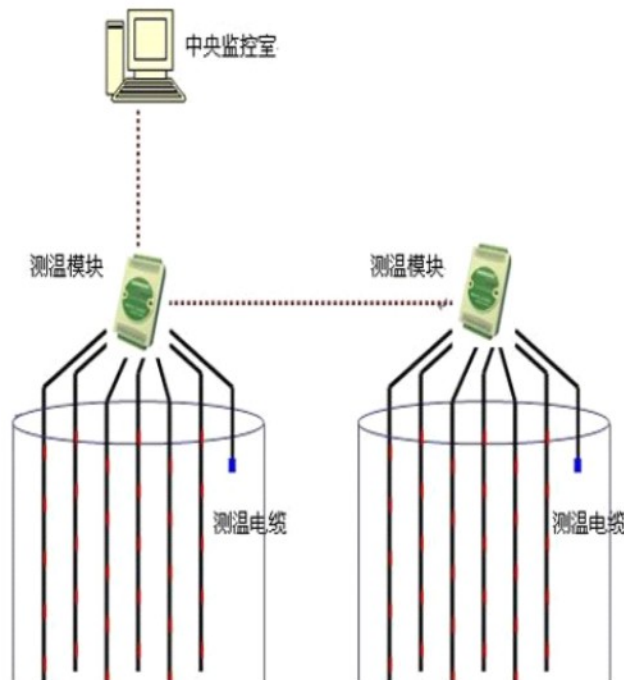
In the process of grain circulation and cleaning, there will be a lot of dust, which is not conducive to the quality of grain, further processing and environmental sanitation. Dust removal equipment can effectively suppress dust.

Dust removal in grain unloading pit:

Flat pulse is the main equipment of dust removal in grain unloading pit. It is also the first part of dust removal. Flat pulse can effectively reduce the dust content of grain by 70% before cleaning.



Temperature measurement system



Temperature measurement system: main machine, extension (temperature measurement module), temperature measurement cable, temperature sensor, heavy hammer.

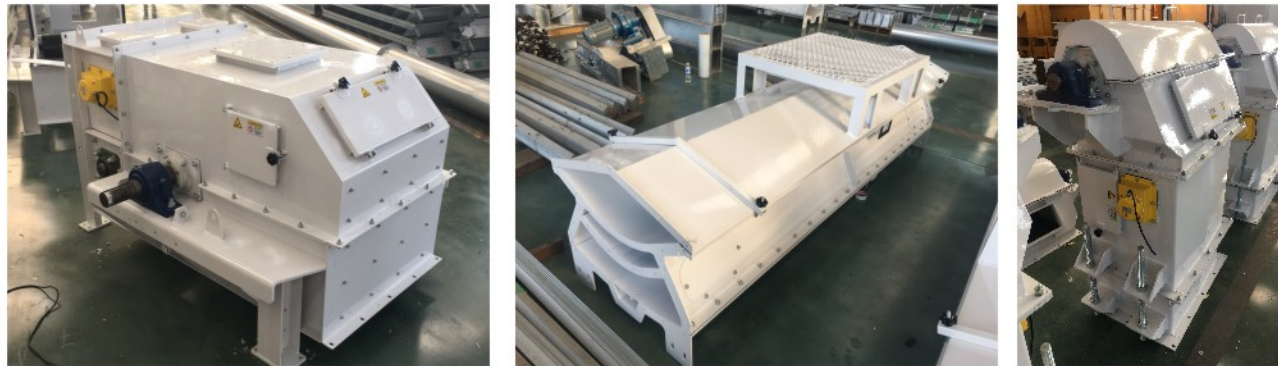
The temperature measuring cable is suspended on the temperature measuring beam of the silo top framework, and the temperature sensors are distributed on the electricity on the cable, the interval is 2m, and the heavy hammer is hung at the end of the cable to make the cable vertical and not easy to swing. The number of cables is determined by the silo diameter, and the measurement range of each cable is within 5 meters of the transverse diameter. Temperature sensor the measured temperature will be transferred from the temperature measurement module to the host computer in the central control room, so as to achieve the effect of real-time temperature monitoring.



High pressure pulse bag filter

BLM series high voltage pulse bag dust filter is applicable to food, food, feed, and other enterprises powder recovery and dust removal, and can according to different needs, the pressed type or suction device. The dust filtering effect is high, exhaust air purification fast: dust filtration efficiency of 99.5%–99.9%, discharge and purify the air in the hot and humid air inside the machine. Volume, covers an area of small, selection of 0.4–0.6MPa high pressure gas source, the cleaning effect is strong; Cylinder structure, flat-bottomed scraper discharge, low pressure casing large tangential inlet, reduces the resistance of the equipment, reduces the bag load, high dust removing effect.

Air Cushion Conveyor



I. Overview

The working principle of air cushion conveyor is: the fan supplies air to the air chamber, the air flow is ejected through the air holes on the air chamber disc groove, and a uniform thin air film is formed between the belt covering the air chamber disc groove and the air chamber disc groove (called an air cushion) to lift the belt and the material on it. The belt runs under the action of the drive motor to achieve the purpose of conveying materials. The formation of the air cushion keeps the belt in a suspended state, avoiding the mechanical friction between the belt and the roller, thereby greatly reducing the running resistance and wear of the belt.

II. The advantages of air cushion conveyor

The air cushion conveyor has excellent performance that the idler conveyor can't match:

1. The running resistance is small, the power of the driving motor is greatly reduced, and the energy saving is more than 8-25%;
2. Due to the small running resistance, the required tension of the belt is greatly reduced, and the number of canvas layers of the belt is greatly reduced, which can reduce 2-3 layers and reduce the purchase cost of the belt;
3. The wear of the belt is small, the service life is greatly improved, and the service life can be extended by at least double;
4. The belt runs smoothly, without bumps and spills. There is no amount of cleaning on site, which will greatly reduce the workload of operators;
5. The air cushion conveyor has automatic neutralization during operation, the belt is always running on the center line of the air chamber disc groove, the belt does not deviate, does not tear the belt, the operation is reliable, no personnel are required to guard, and the maintenance personnel and costs are reduced;
6. The belt runs in the disc groove of the air chamber, avoiding contact with personnel, and there is no problem of belt hurting people, which has excellent safety. Conducive to safe production;
7. The structure of the air cushion conveyor is simple, the air chamber is a fixed part that is not easy to be damaged, basically no maintenance is required, and the maintenance amount can be reduced by more than 80%;
8. The installed power of the driving motor is small, and it can start running at full load without a large power reserve;

Bucket Elevator



1. The lifting range is wide, and there are few requirements for the types and characteristics of materials. It can not only lift general powdery and small granular materials, but also can lift materials with high abrasiveness, good sealing performance, and less environmental pollution.

2. Large conveying capacity. The bucket elevator has the advantages of large conveying capacity per unit time, which can meet the needs of mass production.

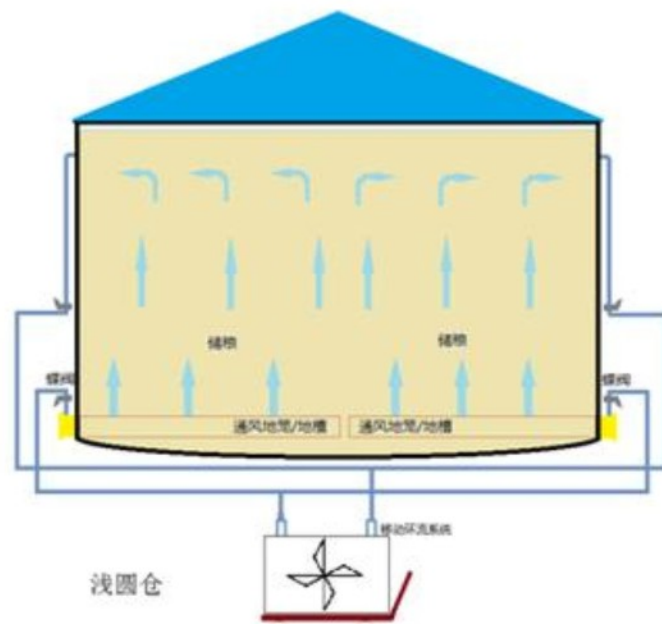
3. Good sealing performance. The working process of the hopper of the bucket elevator and the conveying of materials are carried out in a fully enclosed state, which can effectively prevent dust leakage.

The operation is stable and reliable. It adopts inflow feeding, induction unloading, and large-capacity hopper intensive arrangement. There is almost no phenomenon of feeding and digging, so there is less reactive power, which ensures the reliability of the whole machine operation.

Fumigation system

Fumigation system: phosphine generator, stainless steel pipe and valve, interface, etc.

The generator delivers the drug gas to the silo through the pipeline, and the upper opening of the silo wall is connected with the pipeline back to the generator to form a circulation in the silo.



Advantages of granary compared with room type granary

1. The whole process from feeding to discharging can be completed by the electric control system, which can reduce the waste of transportation and transfer in the middle link;
2. Real time monitoring of grain situation, relevant supporting equipment to ensure the quality of grain;
3. The sealing property is good, so as to avoid the persecution of insects, rats, etc;
4. It can be disassembled and transferred to other positions with corresponding foundation;
5. According to the customer's site and demand design and production.

Technical parameters of 45 degree cone bottom steel plate silo

Item	Model	Rings	Volume (m ³)	Storage Tons	Ring Beam Height	Eave Height	Total Height	Item	Model	Rings	Volume (m ³)	Storage Tons	Ring Beam Height	Eave Height	Total Height
3.667	TCZK03601	1	22	16	2.77	1.19	5.08	10.084	TCZK10008	8	931	698	6.00	9.03	18.01
	TCZK03602	2	34	25		2.31	6.20		TCZK10009	9	1021	766		10.15	19.13
	TCZK03603	3	46	34		3.43	7.32		TCZK10010	10	1110	833		11.27	20.25
	TCZK03604	4	58	43		4.55	8.44		TCZK10011	11	1200	900		12.39	21.37
	TCZK03605	5	69	52		5.67	9.56		TCZK10012	12	1289	967		13.51	22.49
	TCZK03606	6	81	61		6.79	10.68		TCZK10013	13	1379	1034		14.63	23.61
	TCZK03607	7	93	70		7.91	11.80		TCZK10014	14	1468	1101		15.75	24.73
4.584	TCZK04503	3	76	57	3.24	3.43	8.05	11.000	TCZK11009	9	1239	929	6.43	10.15	19.83
	TCZK04504	4	94	71		4.55	9.17		TCZK11010	10	1346	1009		11.27	20.95
	TCZK04505	5	113	84		5.67	10.29		TCZK11011	11	1452	1089		12.39	22.07
	TCZK04506	6	131	98		6.79	11.41		TCZK11012	12	1558	1169		13.51	23.19
	TCZK04507	7	150	112		7.91	12.53		TCZK11013	13	1665	1249		14.63	24.31
	TCZK04508	8	168	126		9.03	13.65		TCZK11014	14	1771	1328		15.75	25.43
5.500	TCZK04509	9	187	140	3.73	10.15	14.77	11.917	TCZK11015	15	1878	1408	6.89	16.87	26.55
	TCZK05504	4	142	106		4.55	9.89		TCZK11909	9	1481	1111		10.15	20.55
	TCZK05505	5	168	126		5.67	11.01		TCZK11910	10	1606	1204		11.27	21.67
	TCZK05506	6	195	146		6.79	12.13		TCZK11911	11	1731	1298		12.39	22.79
	TCZK05507	7	222	166		7.91	13.25		TCZK11912	12	1856	1392		13.51	23.91
	TCZK05508	8	248	186		9.03	14.37		TCZK11913	13	1981	1486		14.63	25.03
	TCZK05509	9	275	206		10.15	15.49		TCZK11914	14	2106	1579		15.75	26.15
6.417	TCZK05510	10	301	226	4.15	11.27	16.61	12.834	TCZK11915	15	2231	1673	7.35	16.87	27.27
	TCZK06406	6	273	205		6.79	12.85		TCZK12809	9	1749	1312		10.15	21.27
	TCZK06407	7	309	232		7.91	13.97		TCZK12810	10	1894	1420		11.27	22.39
	TCZK06408	8	345	259		9.03	15.09		TCZK12811	11	2039	1529		12.39	23.51
	TCZK06409	9	382	286		10.15	16.21		TCZK12812	12	2184	1638		13.51	24.63
	TCZK06410	10	418	313		11.27	17.33		TCZK12813	13	2329	1746		14.63	25.75
	TCZK06411	11	454	340		12.39	18.45		TCZK12814	14	2474	1855		15.75	26.87
7.334	TCZK06412	12	490	368	4.61	13.51	19.57	12.834	TCZK12815	15	2618	1964	7.35	16.87	27.99
	TCZK07307	7	415	311		7.91	14.70								
	TCZK07308	8	462	346		9.03	15.82								
	TCZK07309	9	509	382		10.15	16.94								
	TCZK07310	10	557	417		11.27	18.06								
	TCZK07311	11	604	453		12.39	19.18								
8.250	TCZK07312	12	651	488	5.15	13.51	20.30	12.834				7.35			
	TCZK07313	13	699	524		14.63	21.42								
	TCZK08207	7	538	404		7.91	15.51								
	TCZK08208	8	598	449		9.03	16.63								
	TCZK08209	9	658	493		10.15	17.75								
	TCZK08210	10	718	538		11.27	18.87								
9.167	TCZK08211	11	778	583	5.50	12.39	20.00	12.834				7.35			
	TCZK08212	12	838	628		13.51	21.11								
	TCZK08213	13	898	673		14.63	22.23								
	TCZK09108	8	752	564		9.03	17.24								
	TCZK09109	9	826	619		10.15	18.36								
	TCZK09110	10	900	675		11.27	19.48								
	TCZK09111	11	974	730		12.39	20.60								
9.167	TCZK09112	12	1048	786	5.50	13.51	21.72	12.834				7.35			
	TCZK09113	13	1122	841		14.63	22.84								
	TCZK09114	14	1196	897		15.75	23.96								



45° Hopper Bottom steel silo
 30° Silo Roof;
 45° Hopper Bottom;
 Height of silo bottom outlet flange is 1m;
 Silo volume is the sum of silo roof, silo body and silo hopper bottom;
 Capacity is calculated at 0.75t/m³ bulk density.



Technical parameters of flat bottomed steel plate silo

Technical parameters of flat bottomed steel plate silo

Item Diameter	Model	Rings	Volume (m³)	Storage Tons	Eave Height	Total Height	Item Diameter	Model	Rings	Volume (m³)	Storage Tons	Eave Height	Total Height
4.584	TCK04503	3	63	47	3.43	4.78	11.000	TCK11009	9	1065	799	10.15	13.36
	TCK04504	4	82	61	4.55	5.90		TCK11010	10	1171	878	11.27	14.48
	TCK04505	5	100	75	5.67	7.02		TCK11011	11	1278	958	12.39	15.60
	TCK04506	6	119	89	6.79	8.14		TCK11012	12	1384	1038	13.51	16.72
	TCK04507	7	137	103	7.91	9.26		TCK11013	13	1491	1118	14.63	17.84
	TCK04508	8	156	117	9.03	10.38		TCK11014	14	1597	1198	15.75	18.96
	TCK04509	9	174	131	10.15	11.50		TCK11015	15	1704	1278	16.87	20.08
TCK04510	10	193	144	11.27	12.62	TCK11016	16	1810	1357	17.99	21.20		
5.500	TCK05504	4	120	90	4.55	6.17	11.918	TCK11910	10	1385	1038	11.27	14.74
	TCK05505	5	147	110	5.67	7.29		TCK11911	11	1509	1132	12.39	15.86
	TCK05506	6	173	130	6.79	8.41		TCK11912	12	1634	1226	13.51	16.98
	TCK05507	7	200	150	7.91	9.53		TCK11913	13	1759	1319	14.63	18.10
	TCK05508	8	227	170	9.03	10.65		TCK11914	14	1884	1413	15.75	19.22
	TCK05509	9	253	190	10.15	11.77		TCK11915	15	2009	1507	16.87	20.34
	TCK05510	10	280	210	11.27	12.89		TCK11916	16	2134	1601	17.99	21.46
TCK05511	11	306	230	12.39	14.01	TCK11917	17	2259	1694	19.11	22.58		
6.417	TCK06405	5	203	152	5.67	7.55	12.834	TCK12810	10	1617	1213	11.27	15.00
	TCK06406	6	239	179	6.79	8.67		TCK12811	11	1762	1321	12.39	16.12
	TCK06407	7	275	206	7.91	9.79		TCK12812	12	1907	1430	13.51	17.24
	TCK06408	8	312	234	9.03	10.91		TCK12813	13	2052	1539	14.63	18.36
	TCK06409	9	348	261	10.15	12.03		TCK12814	14	2197	1648	15.75	19.48
	TCK06410	10	384	288	11.27	13.15		TCK12815	15	2342	1756	16.87	20.60
	TCK06411	11	420	315	12.39	14.27		TCK12816	16	2487	1865	17.99	21.72
TCK06412	12	456	342	13.51	15.39	TCK12817	17	2632	1974	19.11	22.84		
7.334	TCK07306	6	316	237	6.79	8.94	13.750	TCK13711	11	2036	1527	12.39	16.39
	TCK07307	7	363	272	7.91	10.06		TCK13712	12	2202	1652	13.51	17.51
	TCK07308	8	411	308	9.03	11.18		TCK13713	13	2369	1776	14.63	18.63
	TCK07309	9	458	343	10.15	12.30		TCK13714	14	2535	1901	15.75	19.75
	TCK07310	10	505	379	11.27	13.42		TCK13715	15	2701	2026	16.87	20.87
	TCK07311	11	553	414	12.39	14.54		TCK13716	16	2868	2151	17.99	21.99
	TCK07312	12	600	450	13.51	15.66		TCK13717	17	3034	2275	19.11	23.11
TCK07313	13	647	485	14.63	16.78	TCK13718	18	3200	2400	20.23	24.23		
8.250	TCK08207	7	465	349	7.91	10.32	14.668	TCK14612	12	2521	1890	13.51	17.77
	TCK08208	8	525	393	9.03	11.44		TCK14613	13	2710	2032	14.63	18.89
	TCK08209	9	585	438	10.15	12.56		TCK14614	14	2899	2174	15.75	20.01
	TCK08210	10	644	483	11.27	13.68		TCK14615	15	3089	2316	16.87	21.13
	TCK08211	11	704	528	12.39	14.80		TCK14616	16	3278	2458	17.99	22.25
	TCK08212	12	764	573	13.51	15.92		TCK14617	17	3467	2600	19.11	23.37
	TCK08213	13	824	618	14.63	17.04		TCK14618	18	3656	2742	20.23	24.49
TCK08214	14	884	663	15.75	18.16	TCK14619	19	3846	2884	21.35	25.61		
9.167	TCK09107	7	580	435	7.91	10.59	15.584	TCK15513	13	3076	2307	14.63	19.18
	TCK09108	8	654	490	9.03	11.71		TCK15514	14	3290	2467	15.75	20.30
	TCK09109	9	728	546	10.15	12.83		TCK15515	15	3504	2628	16.87	21.42
	TCK09110	10	802	601	11.27	13.95		TCK15516	16	3717	2788	17.99	22.54
	TCK09111	11	876	657	12.39	15.07		TCK15517	17	3931	2948	19.11	23.66
	TCK09112	12	949	712	13.51	16.19		TCK15518	18	4145	3108	20.23	24.78
	TCK09113	13	1023	767	14.63	17.31		TCK15519	19	4358	3268	21.35	25.90
TCK09114	14	1097	823	15.75	18.43	TCK15520	20	4572	3429	22.47	27.02		
10.084	TCK10008	8	798	599	9.03	11.97	16.500	TCK16514	14	3707	2780	15.75	20.26
	TCK10009	9	888	666	10.15	13.09		TCK16515	15	3947	2960	16.87	21.38
	TCK10010	10	977	733	11.27	14.21		TCK16516	16	4186	3139	17.99	22.50
	TCK10011	11	1067	800	12.39	15.33		TCK16517	17	4426	3319	19.11	23.62
	TCK10012	12	1156	867	13.51	16.45		TCK16518	18	4665	3499	20.23	24.74
	TCK10013	13	1245	934	14.63	17.57		TCK16519	19	4905	3678	21.35	25.86
	TCK10014	14	1335	1001	15.75	18.69		TCK16520	20	5144	3858	22.47	26.98
TCK10015	15	1424	1068	16.87	19.81	TCK16521	21	5384	4038	23.59	28.10		

Item Diameter	Model	Rings	Volume (m³)	Storage Tons	Eave Height	Total Height	Item Diameter	Model	Rings	Volume (m³)	Storage Tons	Eave Height	Total Height
17.418	TCK17414	14	4151	3113	15.75	20.51	23.835	TCK23815	15	8549	6412	16.87	23.38
	TCK17415	15	4418	3314	16.87	21.63		TCK23816	16	9049	6787	17.99	24.50
	TCK17416	16	4685	3514	17.99	22.75		TCK23817	17	9549	7161	19.11	25.62
	TCK17417	17	4952	3714	19.11	23.87		TCK23818	18	10048	7536	20.23	26.74
	TCK17418	18	5219	3914	20.23	24.99		TCK23819	19	10548	7911	21.35	27.86
	TCK17419	19	5486	4114	21.35	26.11		TCK23820	20	11048	8286	22.47	28.98
	TCK17420	20	5753	4314	22.47	27.23		TCK23821	21	11548	8661	23.59	30.10
TCK17421	21	6019	4514	23.59	28.35	TCK23822	22	12047	9035	24.71	31.22		
18.334	TCK18314	14	4623	3467	15.75	20.76	24.751	TCK24715	15	9262	6946	16.87	23.63
	TCK18315	15	4919	3689	16.87	21.88		TCK24716	16	9801	7351	17.99	24.75
	TCK18316	16	5215	3911	17.99	23.00		TCK24717	17	10340	7755	19.11	25.87
	TCK18317	17	5510	4133	19.11	24.12		TCK24718	18	10879	8159	20.23	26.99
	TCK18318	18	5806	4354	20.23	25.24		TCK24719	19	11418	8563	21.35	28.11
	TCK18319	19	6102	4576	21.35	26.36		TCK24720	20	11957	8967	22.47	29.23
	TCK18320	20	6397	4798	22.47	27.48		TCK24721	21	12495	9371	23.59	30.35
TCK18321	21	6693	5020	23.59	28.60	TCK24722	22	13034	9776	24.71	31.47		
19.251	TCK19214	14	5123	3842	15.75	21.01	25.668	TCK25615	15	10006	7505	16.87	23.88
	TCK19215	15	5449	4086	16.87	22.13		TCK25616	16	10586	7939	17.99	25.00
	TCK19216	16	5775	4331	17.99	23.25		TCK25617	17	11166	8374	19.11	26.12
	TCK19217	17	6101	4575	19.11	24.37		TCK25618	18	11745	8809	20.23	27.24
	TCK19218	18	6427	4820	20.23	25.49		TCK25619	19	12325	9243	21.35	28.36
	TCK19219	19	6753	5065	21.35	26.61		TCK25620	20	12904	9678	22.47	29.48
	TCK19220	20	7079	5309	22.47	27.73		TCK25621	21	13484	10113	23.59	30.60
TCK19221	21	7405	5554	23.59	28.85	TCK25622	22	14063	10547	24.71	31.72		
20.168	TCK20115	15	6008	4506	16.87	22.38	26.585	TCK26515	15	10783	8087	16.87	24.13
	TCK20116	16	6366	4774	17.99	23.50		TCK26516	16	11405	8553	17.99	25.25
	TCK20117	17	6724	5043	19.11	24.62		TCK26517	17	12026	9020	19.11	26.37
	TCK20118	18	7082	5311	20.23	25.74		TCK26518	18	12648	9486	20.23	27.49
	TCK20119	19	7439	5579	21.35	26.86		TCK26519	19	13270	9952	21.35	28.61
	TCK20120	20	7797	5848	22.47	27.98		TCK26520	20	13891	10418	22.47	29.73
	TCK20121	21	8155	6116	23.59	29.10		TCK26521	21	14513	10885	23.59	30.85
TCK20122	22	8513	6385	24.71	30.22	TCK26522	22	15135	11351	24.71	31.97		
21.084	TCK21015	15	6598	4948	16.87	22.63	27.501	TCK27515	15	11592	8694	16.87	24.38
	TCK21016	16	6989	5241	17.99	23.75		TCK27516	16	12257	9193	17.99	25.50
	TCK21017	17	7380	5535	19.11	24.87		TCK27517	17	12922	9692	19.11	26.62
	TCK21018	18	7771	5828	20.23	25.99		TCK27518	18	13588	10191	20.23	27.74
	TCK21019	19	8162	6121	21.35	27.11		TCK27519	19	14253	10690	21.35	28.86
	TCK21020	20	8553	6415	22.47	28.23		TCK27520	20	14918	11189	22.47	29.98
	TCK21021	21	8944	6708	23.59	29.35		TCK27521	21	15584	11688	23.59	31.10
TCK21022	22	9335	7001	24.71	30.47	TCK27522	22	16249	12187	24.71	32.22		
22.000	TCK22015	15	7217	5413	16.87	22.88	28.418	TCK28416	16	13144	9858	17.99	25.75
	TCK22016	16	7643	5732	17.99	24.00		TCK28417	17	13854	10391	19.11	26.87
	TCK22017	17	8069	6052	19.11	25.12		TCK28418	18	14565	10923	20.23	27.99
	TCK22018	18	8495										

Flat Bottom steel silo

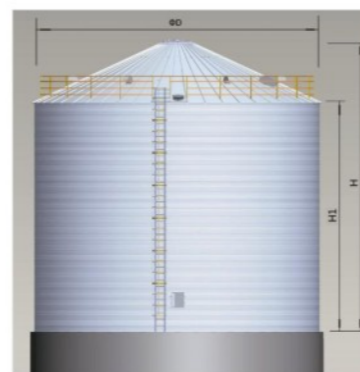
30° Silo Roof;

Silo volume is the sum of silo roof plus silo body;

Capacity is calculated at 0.75t/m³ bulk density.

Technical parameters of flat bottomed steel plate silo

Item Diameter	Model	Rings	Volume (m ³)	Storage Tons	Eave Height	Total Height
30.252	TCK30216	16	15021	11266	17.99	26.25
	TCK30217	17	15826	11870	19.11	27.37
	TCK30218	18	16631	12473	20.23	28.49
	TCK30219	19	17436	13077	21.35	29.61
	TCK30220	20	18241	13681	22.47	30.73
	TCK30221	21	19046	14285	23.59	31.85
	TCK30222	22	19852	14889	24.71	32.97
TCK30223	23	20657	15492	25.83	34.09	
31.168	TCK31116	16	16013	12009	17.99	26.50
	TCK31117	17	16867	12650	19.11	27.62
	TCK31118	18	17722	13291	20.23	28.74
	TCK31119	19	18576	13932	21.35	29.86
	TCK31120	20	19431	14573	22.47	30.98
	TCK31121	21	20286	15214	23.59	32.10
	TCK31122	22	21140	15855	24.71	33.22
TCK31123	23	21995	16496	25.83	34.34	
32.085	TCK32016	16	17040	12780	17.99	26.75
	TCK32017	17	17945	13459	19.11	27.87
	TCK32018	18	18851	14138	20.23	28.99
	TCK32019	19	19757	14817	21.35	30.11
	TCK32020	20	20662	15496	22.47	31.23
	TCK32021	21	21568	16176	23.59	32.35
	TCK32022	22	22473	16855	24.71	33.47
TCK32023	23	23379	17534	25.83	34.59	



60° Hopper Bottom steel silo

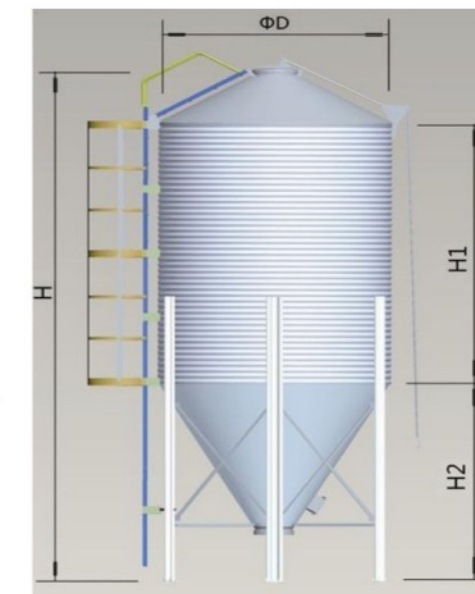
30° Silo Roof;

60° Hopper Bottom;

Height of silo bottom outlet flange is 0.63m;

Silo volume is the sum of silo roof, silo body and silo hopper;

Capacity is calculated at 0.5t/m³ bulk density.



Technical parameters of 60 degree material tower

Item Diameter	Model	Rings	Volume (m ³)	Storage Tons	Ring Beam Height	Eave Height	Total Height
1.800	TCKZ01801	1	4.9	3.7	1.925	1.19	3.58
	TCKZ01802	2	7.9	5.9		2.31	4.70
	TCKZ01803	3	10.8	8.1		3.43	5.82
	TCKZ01804	4	13.8	10.3		4.55	6.94
	TCKZ01805	5	16.8	12.6		5.67	8.06
2.750	TCKZ02701	1	13.2	10	2.726	1.19	4.64
	TCKZ02702	2	19.9	15		2.31	5.76
	TCKZ02703	3	26.5	20		3.43	6.88
	TCKZ02704	4	33.2	25		4.55	8.00
	TCKZ02705	5	39.8	30		5.67	9.12

Drying equipment



Design description and characteristics of grain drying tower

1. Scientifically optimize the arrangement of corner boxes, with a downstream section set at the top to prevent frozen grains from being directly exposed to high temperatures. The lower part adopts a reverse mixed flow section to quickly reduce moisture. Add a slow cooling section at each wind temperature range to prevent grain bursting and cracking. A reversing mechanism is set up in the middle drying section for more uniform drying, and a cooling section is set at the bottom to reduce grain temperature while reducing precipitation for storage after drying.

2. The tower reinforcement is uniformly distributed throughout the entire tower, and the interior is reinforced with high-quality thick walled seamless pipes and angle steel tie bars. The surrounding side panels are processed and formed using large equipment as a whole. The external insulation layer is made of 50mm thick high-density aluminum aluminate plate, and the color steel plate thickness is 0.4mm.

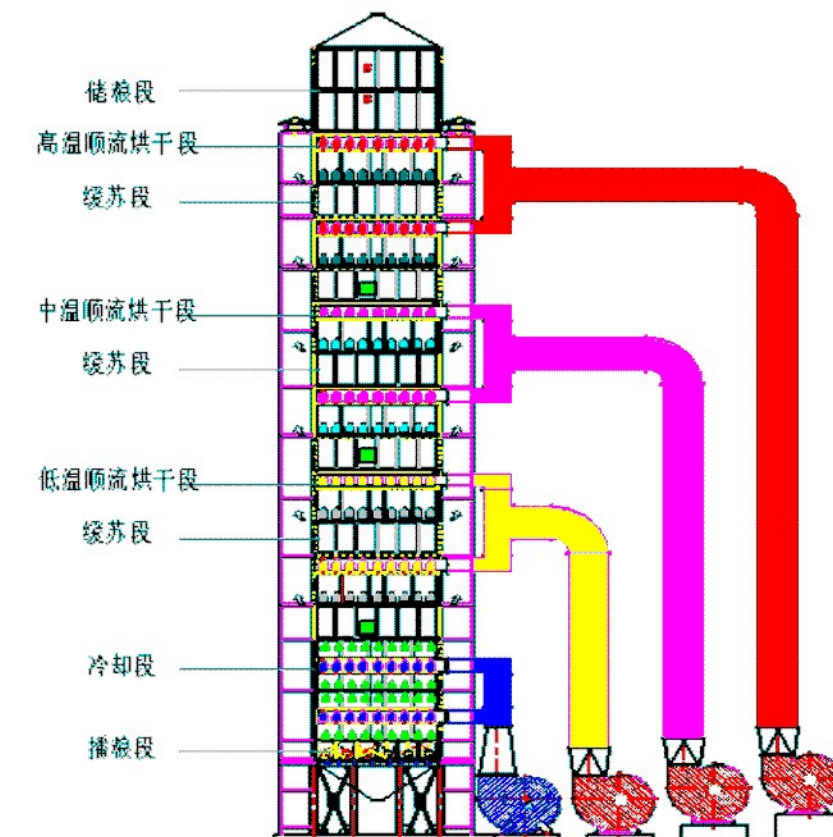
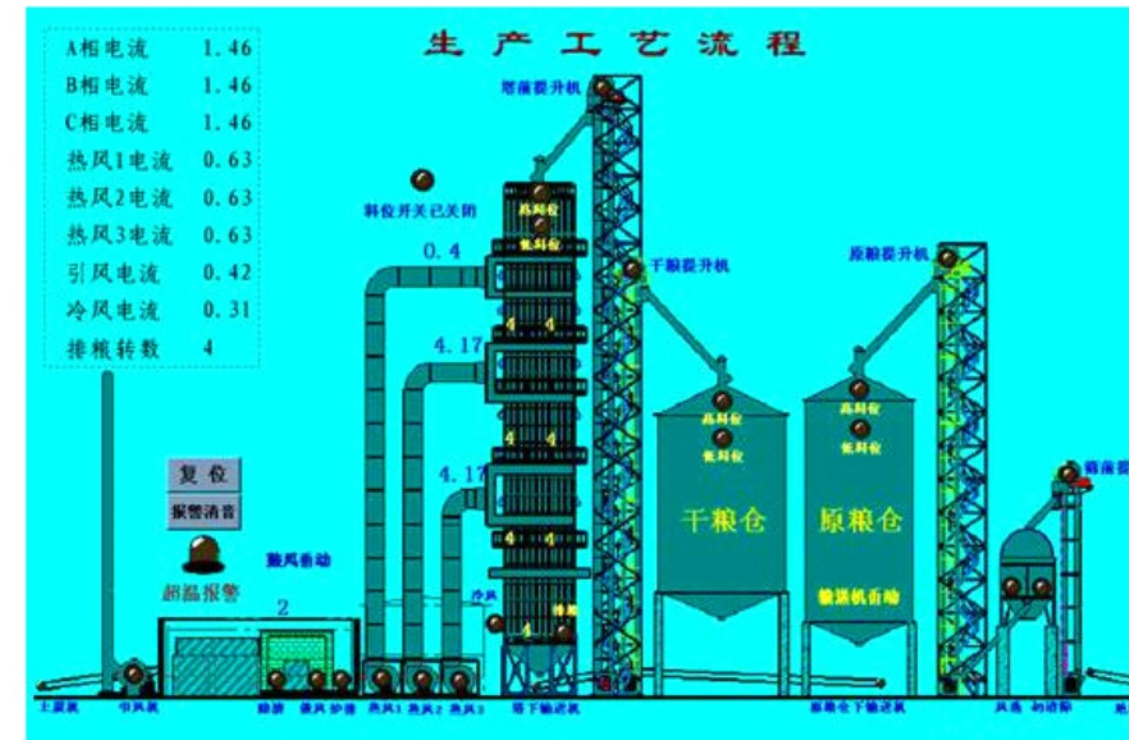
3. Each fan adopts a high-temperature resistant fan for boilers, with an overall support and steel plate forming. The motor and fan adopt D-type or C-type transmission, with a long service life.

4. The external insulation of the hot air pipeline is overall, and the flange interface is sealed with high-temperature resistant materials.

5. The hoist barrel is welded with cold plates, and the head is a DCYK hard tooth bevel gear reducer specially designed for mining. It is made of high-strength wear-resistant nylon dustpan and reinforced tear resistant lifting belt from well-known domestic manufacturers.

6. The burner adopts imported components and domestically assembled brand products, with stable combustion and small temperature fluctuations.

7. The control cabinet is equipped with dynamic lighting simulation drying process display, PLC program control system, and fully automatic control of grain loading.



Relevant parameters of grain drying tower Equipment List of 200t/d Drying Tower

Serial number	name	Specification and model	power	Number	Weight/ton	notes	
1	Tower front hoist	TDTG50/23	XWD6-17-11kw-4	1	1.88	H=25.5m	
2	tower	2.5m × 2.5m*10 storey		1	4.4	H=25m	
3	Drying tower HSNT200	Internal dimensions 2.5X2.5X23m	XWD3-71-1.5kw-4	1	27	Equipped with variable frequency speed control motor, including air duct	
4	Hot air blower	Y5-47 8C	30 Kw-4	3	2.2		
5	air cooler	4-72-No.6C	15 Kw-4	1	0.35		
6	Hot air stove	fire grate	RFL-4 240 10000 kcal	ZJ4WC 0.75kw	1	10	
7		heat exchanger	RFL-4		1		
8		Induced draft fan	Y5-48 8C	22 Kw-4	1		
9		blowing machine	4-72 4A	5.5 Kw-2	1		
10		Coal feeder	SMJ-4	1.1 Kw-4 WD150-40	1		turbo-Worm Reducer
11		Slag extractor	CZJ-4	1.1 Kw-6 WD150-40	1		turbo-Worm Reducer
12	Chutes and ladders			3.5m			
13	Electrical control			1 cover			
	amount to		total power: 147.95KW		45.83		

Equipment List of 300t/d Drying Tower

Serial number	name	Specification and model	power	Number	Weight/ton	notes	
1	Tower front hoist	TDTG50/28	XWD6-17-11kw-4	1	2.11	H=27.5m	
2	tower	2.5m × 2.5m*11 storey		1	4.85	H=27.5m	
3	Drying tower HSNT300	Internal dimensions 3.5X3.0X24.3m	XWD5-87-2.2kw-4	1	37	Equipped with variable frequency speed control motor, including air duct	
4	Hot air blower	Y4-68 10D	37 Kw-4	3	3.6		
5	air cooler	4-72- No.8C	30Kw-2 1600change	1	0.7		
6	Hot air stove	fire grate	RFL-6360 10000 kcal	ZJ4WC 0.75kw	1	11.7	
7		heat exchanger	RFL-6		1		
8		Induced draft fan	Y5-48 8C	30 Kw-4	1		
9		blowing machine	4-72 4.5A	7.5 Kw-2	1		
10		Coal feeder	SMJ-6	1.1 Kw-4 WD150-40	1		turbo-Worm Reducer
11		Slag extractor	CZJ-6	1.1 Kw-6 WD150-40	1		turbo-Worm Reducer
12	Chutes and ladders			4m			
13	Electrical control			1 cover			
	amount to		total power: 194.65KW		54.7		

Equipment List of 500t/d Drying Tower

Serial number	name	Specification and model	power	Number	Weight/ton	notes		
1	Tower front hoist	TDTG50/32	XWD8-17-18.5kw-4	1	2.55	H=29.5m		
2	tower	2.5m × 2.5m*12 storey		1	5.5	H=30m		
3	Drying tower HSNT500	Internal dimensions 4.5X4X26m	XWD5-87-3kw-4	1	55	Equipped with variable frequency speed control motor, including air duct		
4	Hot air blower	Y4-73 11D	55 Kw-4	3	5.94			
5	air cooler	G4-73 11D	30Kw-6	1	1.85			
6	Hot air stove	fire grate	RFL-10600 10000 kcal	ZJ10WC 1.1kw	1	18.5	Qingdao Jiayi Transmission	
7		heat exchanger	RFL-10		1			
8		Induced draft fan	Y5-48 10C	55 Kw-4	1			
9		blowing machine	4-72 6C	15 Kw-4	1			
10		Coal feeder	SMJ-10	1.5 Kw-4 WD150-40	1			turbo-Worm Reducer
11		Slag extractor	CZJ-10	1.5 Kw-6 WD150-40	1			turbo-Worm Reducer
12	Chutes and ladders			5m				
13	Electrical control			1 cover				
	amount to		total power: 290.6KW		89.34			

Equipment List of 1000t/d Drying Tower

Serial number	name	Specification and model	power	Number	Weight/ton	notes		
1	Tower front hoist	TDTG63/32	XWD9-17-22kw-4	1	6.12	H=37.5m		
2	tower	2.5m × 2.5m		1	6.87	H=37.5m		
3	Drying tower HSNT1000	Internal dimensions 5.5X5.5X32.5m	XWED64-187-4kw-4	1	137	Equipped with variable frequency speed control motor, including air duct		
4	Hot air blower	Y6-51 16D	110 Kw-6	3	10.8			
5	air cooler	G4-73 16D	45Kw-10	1	1.23			
6	Hot air stove	fire grate	RFL-201200 10000 kcal	ZJ20WC 1.5kw	1	76.1	Extended Jiayi Transmission	
7		heat exchanger	RFL-20		1			
8		Induced draft fan	Y5-48 12.5C	110 Kw-4	1			
9		blowing machine	4-72 8C	30 Kw-2	1			
10		Coal feeder						
11		Slag extractor	CZJ-10 lengthening	2.2Kw-6 WD150-40	1			According to the lengthening of the slag outlet of the 20T furnace
12	Chutes and ladders			6m				
13	Electrical control			1 cover				
	amount to		total power: 544.7KW		238.12			

Agricultural machinery subsidies is good for both government and the people, farmers gets benefit from subsidies, business gets the market, the government gets the people's support, the economy develops, improve service and ensure the implementation of subsidies. Adhere to the implementation of agricultural in accordance with the provisions, to ensure the farmers get good quality agriculture products and good service.

The company independently developed a new batch of grain circulating dryer with a handling capacity of 50 tons, which filled the gap in the market. The heating section of this model adopts the air inlet from middle and the heating on both sides to divert the air into the two sides, so that the heating effect is more uniform, and the product has high output and low energy consumption.



PRODUCT INTRODUCTION

5H-KB series of batch type circulation grain drying machine is mainly for the food enterprises, management profession of improving economic efficiency, reduce the grain moisture, ensure safe storage: For farming cooperatives reduce air link, reduce the labor intensity, saving the cost of production and design of drying equipment, comprehensive advantages at home and abroad a variety of dryer. This advanced technology, reasonable structure and novel, good drying quality, less energy consumption, low investment, high adaptability, and can dry corn, rice, sorghum, wheat, barley, soybeans and other crops such as fruit of commodity grain and feed grains.

1. Product model and name

Product type: 5H-KB Product name: batch cycle grain dryer

2. Product range

This machine is widely used in grain materials such as grain, such as rice, corn, wheat, soybean, sorghum, rapeseed, etc., and also suitable for seed drying. At the same time, the granule materials such as oil tea seed and sunflower seeds can be dried.

3. Main features of products

5H-KB grain drying machine has no power flow, easy operation and small occupation area. The material is used to dry the area through the pluralistic drying area to achieve continuous, gentle and even heat exchange. Through air flow control and food crop movement, food crops can be evenly and thoroughly dried, and the grain dryer is most suitable for slow, uniform drying. Follow the convenient transportation, simple installation and maintenance, energy conservation, environmental protection, cost-effective, low power, low energy consumption and environmental protection principle. The abandoned rice husk, straw, wood through the full combustion, indirect heat removal. Also can use electricity, natural gas and so on as heating medium, clean hot wind to dry matter does not produce any pollution.

Grain Dryer



Serial number	Project	Company	Specifications			
1	Model specification	/	5H-KB-10	5H-KB-15		
2	Structural style	/	Circulatory type	Circulatory type		
3	Drying method	/	Indirect heating	Indirect heating		
4	Dryer body shape size(long x wide x high)	mm	2700x3600x12000	2900x4050x10800		
5	Batch processing	t	10	15		
6	Drying rate	%/h	0.5~1.2	0.5~1.2		
7	Drying capacity	t·%/h	≥3.88	≥7.8		
8	Installed capacity	m³	13.8	28		
9	Quantity of dry section /height	↑/mm	3/750	2/750		
10	The quantity / height of the Suzhou section	↑/mm	1/610	1/610		
11	Hot air temperature range	°C	45~105	45~105		
12	Hot air blower	Number	/	1	1	
		Model name	/	4-72-5.1CY90-4centrifugal fan	4-72-5.1CY90-4centrifugal fan	
		Speed	r/min	1900	1900	
		Wind pressure	Pa	870	870	
		Flow	m³/h	12000	12000	
		Motor power	kw	4	4	
13	Hot air stove	Model name	/	5H-20 type hot blast stove	5H-30 type hot blast stove	
		Type of grate	/	Fixed type	Fixed type	
		Exchanger type	/	Coal heat exchanger	Coal heat exchanger	
		Smoke fan	Model	/	4-72-2.8A	4-72-2.8A
			Speed	r/min	2900	2900
			Flow	m³/h	1131~2356	1688~3517
			Motor power	kw	1.5	2.2
		Thermal power(output heat)	kj/h	0.84x10 ⁶ (200thousand big cards/hours)	1.67x10 ⁶ (400thousand big cards/hours)	
		Type of fuel	/	Biomass pellet rice husk dual-purpose furnace(independent research and development)/natural gas /liquefied petroleum gas		
		Heating mode	/	Indirect heating	Indirect heating	
Spray head number(point)	↑	1	1			
14	Grain draining motor power	kw	0.2	0.2		
15	Hoist productivity	t/h	10	13.5		
16	Hoist motor power	kw	2.2	2.2		

Serial number	Project	Company	Specifications			
1	Model specification	/	5H-KB-20	5H-KB-35		
2	Structural style	/	Circulatory type	Circulatory type		
3	Drying method	/	Indirect heating	Indirect heating		
4	Dryer body shape size (long x wide x high)	mm	2310x2080x10800	3000x2510x12240		
5	Batch processing	t	20	35		
6	Drying rate	%/h	0.5~1.2	0.5~1.2		
7	Drying capacity	t·%/h	≥7.8	≥13.6		
8	Installed capacity	m³	37	63		
9	Quantity of dry section /height	↑/mm	3/750	3/750		
10	The quantity / height of the Suzhou section	↑/mm	1/610	1/610		
11	Hot air temperature range	°C	45~105	45~105		
12	Hot air blower	Number	/	1	2	
		Model name	/	4-72-5.1CY90-4 centrifugal fan	4-72-5.1CY90-4 centrifugal fan	
		Speed	r/min	1900	1900	
		Wind pressure	Pa	900	900	
		Flow	m³/h	12000	12000	
		Motor power	kw	4.0	4.0x2	
13	Hot air stove	Model name	/	5H-60 type hot blast stove	5H-100 type hot blast stove	
		Type of grate	/	Fixed type	Fixed type	
		Exchanger type	/	Coal heat exchanger	Coal heat exchanger	
		Smoke fan	Model	/	4-72-3.2A	4-72-3.2A
			Speed	r/min	2900	2900
			Flow	m³/h	1688~3517	1688~3517
			Motor power	kw	2.2	2.2
		Thermal power (output heat)	kj/h	1.67x10 ⁶ (600,000 calories per hour)	2.51x10 ⁶ (1 million calories per hour)	
		Type of fuel	/	Biomass pellet rice husk dual-purpose furnace(independent research and development)/ natural gas /liquefied petroleum gas		
		Heating mode	/	Indirect heating	Indirect heating	
Spray head number(point)	↑	1	1			
14	Grain draining motor power	kw	0.2	0.4		
15	Hoist productivity	t/h	20	30		
16	Hoist motor power	kw	2.2	3.0		

Serial number	Project	Company	Specifications			
1	Model specification	/	5H-KB-50			
2	Structural style	/	Circulatory type			
3	Drying method	/	Indirect heating/direct heating			
4	Dryer body shape size (long x wide x high)	mm	5075x2900x12170			
5	Batch processing	t	50			
6	Drying rate	%/h	0.5 ~1.2			
7	Drying capacity	t · %/h	≥ 19.4			
8	Installed capacity	m ³	90.3			
9	Quantity of dry section /height	↑/mm	3/1040			
10	The quantity / height of the Suzhou section	↑/mm	10/670			
11	Hot air temperature range	°C	50~90			
12	Hot air blower	Number	/	1	2	
		Model name	/	4-72-5.1CY90-4 centrifugal fan	4-72-5.1CY90-4 centrifugal fan	
		Speed	r/min	1450	1900	
		Wind pressure	Pa	868~1284	900	
		Flow	m ³ /h	20442~30993	12000	
		Motor power	kw	15	4x2	
13	Hot air stove	Model name	/	5H-60 type hot blast stove		
		Type of grate	/	Fixed type		
		Exchanger type	/	Coal heat exchanger		
		Smoke fan	Model	/	4-72-3.2A	
			Speed	r/min	2900	
			Flow	m ³ /h	1688~3517	
			Motor power	kw	2.2	
		Thermal power(output heat)	kj/h	2.93x10 ⁶ (700,000 calories per hour)		
		Type of fuel	/	Biomass pellet rice husk dual-purpose furnace(independent research and development)/natural gas /liquefied petroleum gas		
Heating mode	/	Indirect heating				
Spray head number(point)	↑	1				
14	Grain draining motor power	kw	0.4			
15	Hoist productivity	t/h	33x2			
16	Hoist motor power	kw	4kwx2			

Working principle

The mesh belt drying equipment uses hot air as the drying medium, and the hot air is sent to the dryer through the induced draft fan to dry the materials; the processed materials are conveyed by multilayer stainless steel mesh belts and passed through a multilayer loop in the dryer. After inverting, the hot air passes through the mesh belt and the material layer from bottom to top, and is dried layer by layer to finally achieve the purpose of drying. According to the difference of material moisture, the electronic control system can adjust the size of the induced draft fan, the running speed of the belt and the temperature inside the dryer to ensure the best drying effect and maximize the efficiency.



Application

1. Flower and leaf categories: chrysanthemum, honeysuckle, Artichoke flowers, hollyhock, hemp leaf, tea, valerian, and imperial bamboo grass;
2. Roots and stems: yam, rehmannia glutinosa, radix scutellariae, puerarin, Sweetpotato, cassava, potato, taro, bellflower, konjac, Banlangen, etc;
3. vegetables: pepper, small yellow ginger, Lu Jiang, garlic, white radish, carrots, papaya silk, lettuce, chives, etc.;
4. Fruits: lotus seeds, sunflower seeds, watermelon seeds, pumpkin seeds, tomatoes, staranise, peppercorns, mulberry, hawthorn, pinellia, forsythia, etc.

Accurate temperature control

Traditional drying uses artificial combustion to control the temperature. It is not able to reach the drying technology requirements due to factors such as combustion technology, physiological characteristics, combustion material quality, and processing quality. Mesh Belt Dryer has a dedicated temperature control system for drying and configuration, can accurately control the materials temperature to ± 2C to ensure the quality of drying.

Operating speed is controllable

The driving part of the mesh belt drying equipment adopts a frequency conversion speed regulating motor, and the running speed is adjustable and controllable. The speed range of the

Mesh belt dryer



general motor is between 50–1500 rpm, and the time from feeding to discharging can be controlled within 1–15 hours. The customer can control the time of internal operation in the drying according to the difference in the moisture of the material, and maximize the efficiency under the premise of guaranteeing the drying effect.

Uniform Drying Effect

The mesh belt drying equipment has a multilayer mesh belt structure. Each mesh belt is equipped with a stopper and a material guide device to prevent the material from falling directly from the upper layer to the next layer, so as to avoid the occurrence of blocking materials. With the drying equipment inside the cycle of turnover, layer by layer drying; feeding conveyor with self-feeding device, according to different bulk density of material to adjust the thickness of the material and as much as possible to increase the weight of the material into the dryer, enhance the drying capacity, and ensure that the material drying degree is uniform.



Clean and sanitary

No matter which kind of heat source is used to provide heat, the inside of the drying equipment is pure hot air. The mesh belt part is made of food grade 304 stainless steel and will not cause any pollution to the material.

Good drying quality

Mesh belt drying equipment is a gentle drying method that simulates natural drying to a maximum degree.

The evaporation rate of surface moisture is relatively close to the internal moisture migration rate to the surface, so that the quality of the dried product is good, the color is good, and the product grade is high. The vitamins obtained by ordinary drying methods have low retention of vitamins and poor heat-resistance vitamins, and their color changes greatly.

Dehumidify quickly. Big dehumidification

The materials inside the mesh belt drying equipment are dewatered and dried through the mesh belt layer by layer.

The moisture generated during the drying process is directly evacuated from the top layer, and the hot air rapidly reduces the relative humidity inside the drying equipment to the lowest level. The material contact time is very

short, ensuring that the color of the material does not change. The network belt drying equipment adopts two kinds of dry dehydration methods: heat drying and ventilating drying. The reasonable use of hot air heat and superb moisture removal capability can be applied to all kinds of high moisture materials.



Component structure description

1. Heat source system

The heat source system includes an induced draft fan and a heat source device. The heat source device can be determined based on the customer's own factors. The types of heat source devices are divided into: wood coal, biomass, natural gas, diesel and so on.

2. Feed and discharge system

The feeding and discharging system consists of a feeding conveyor and a discharging conveyor. The feeding conveyor is provided with a hopper and the synchronizing operation of the driving unit of the drying host is maintained.

3. Traditional system

The system uses motor (frequency control) + reducer + chain drive combination structure. The operating speed of the belt can be achieved by adjusting the operating frequency of the motor.

4. Conveyor belt system

The system uses motor (frequency control) + reducer + chain drive combination structure. The operating speed of the belt can be achieved by adjusting the operating frequency of the motor.

The chains on both sides are connected together by struts, positioned by sprocket and angle rails, mesh belts are fixed on the struts, and run synchronously with chains and struts.

5. Drying host

Drying machine includes closed box, mesh chain conveyor and drive unit. The cabinet adopts a two-way door to facilitate inspection, disassembly of parts, easy opening, and easy cleaning.

Dryer host observation door material is varied, such as: stainless steel, stoving varnish material, color steel tile material and polyurethane insulation board material, users can choose according to their own needs.



**2022 Xinyang Huaibin Port Project, 18-3000 tons
of cement cone bottom silo+2-300 tons of
grain drying tower**



MAIN SILO PROJECTS



2021 Wen County Government Cooperation Project,
3-1000 Tons Conical Bottom Steel Plate silo



Jiangxi Jiujiang Shanggang Group Terminal Transfer Silo Project

MAIN SILO PROJECTS



2022 Sichuan Yanting Project, 2-500 ton conical bottom steel plate silo+1 600 ton grain drying tower

Inner Mongolia Chifeng city grain deep processing project, 10-10000T silo

MAIN SILO PROJECTS



2022 Inner Mongolia Bayannur 10–300 ton cone bottom steel plate silo

2022 Xinjiang 8–300 ton cone bottom steel plate silo

MAIN SILO PROJECTS



2023 Uganda 2-2000 ton flat bottom steel plate silo



2020 Gansu Qingyang 5000T Cement Flat Bottom silo Project



2023 Angola 2-4000 ton cement flat bottom silo+1-300 ton cone bottom steel plate silo

MAIN SILO PROJECTS



Minglong Animal Husbandry layer chicken feed line project



2021 Laos Project, Type 35 Dryer+2-300 Ton Cone Bottom Steel Plate silo

MAIN SILO PROJECTS



Field photos of each project – grain drying tower



MAIN SILO PROJECTS



MAIN SILO PROJECTS



MAIN SILO PROJECTS



Grain and Oil Company Project



Pig Breeding Company Feed Silo Project

MAIN SILO PROJECTS



Winery project



Rice Factory Project

OUR SERVICE



Pre sales



- Pre sales:**
1. Selection of equipment model.
 2. Design and manufacture products according to customers' special requirements.
 3. Train technical personnel for clients.
 4. The company sends engineering and technical personnel to the user's site free of charge to plan the site, design the best process and plan for the user.

In sales



- In sales:**
1. Product acceptance.
 2. Assist clients in drafting construction plans.

After sales



- After sales:**
1. Free assignment of dedicated after-sales service personnel. Arrive on-site to guide customers in installation and debugging.
 2. Equipment installation and debugging.
 3. On site training for operators.
 4. After the installation of the complete set of equipment, dedicated technical personnel will provide free assistance. Smooth production at the customer's site until customer satisfaction is achieved.

- Technical services:**
1. Design the solutions According to buyer's requirement.
 2. After receiving the deposit, the seller shall provide related technical documents for equipment installation, in addition to those with special requirements.

- After-Sales Service:**
3. During the installation and commissioning, the seller shall send technician to the site for instruction of installation and commissioning, and for training of workers.
 4. Visa fees, travel expenses (including the expense of airline ticket, train ticket, board and lodging), and worker service fees are borne by the buyer. The buyer also need to get a Chinese translator to help engineer communication in your area.
 5. If there is any equipment failure caused by the buyer, the seller shall assist the maintenance of machines and replacement of fittings, and charges appropriate fees.
 6. Beyond the guarantee period, the seller can provide services and fittings at a most preferential price.
 7. The seller can provide consultation and inspection services freely of other products, especially for the up-stream and down-stream products of our equipment.

Henan Haokebang Machinery Equipment Co., Ltd. firmly believes in the business philosophy of "Heaven rewards diligence, and commerce rewards trustworthiness". Our philosophy is to strictly control the quality of equipment and provide refined pre-sales, in sales, and after-sales services.